



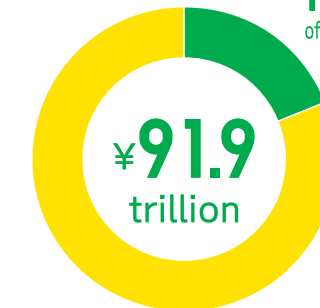
ABOUT TOKYO

Tokyo, one of the most prominent megalopolises in the world, has many faces. Here we introduce our city from various angles, including our residents, finances, and symbols.

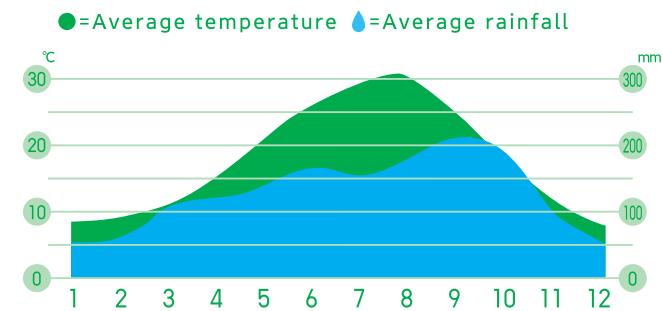
Tokyo, one of the most prominent megalopolises in the world, has many faces. Here we introduce our city from various angles, including our residents, finances, and symbols.

► Tokyo's GDP (Nominal)
Compared to National GDP (2012)
Japan ¥472.6 trillion

19.4%
of National GDP



► Average Temperature and Rainfall
(Source: Japan Meteorological Agency, data from 1981 to 2010)



► Tokyo Crest



The crest of Tokyo represents the sun radiating energy in six directions. It symbolizes Tokyo as the center of Japan.

► Tokyo Symbol



The symbol of the metropolis is made up of three arcs resembling a ginkgo leaf and representing the letter T for Tokyo. The metropolitan logo is rendered in a vivid green color to symbolize Tokyo's vibrancy, prosperity, comfort, and tranquility.

► Tokyo Flower



The *Somei-Yoshino* cherry tree was developed in the late Edo period to early Meiji era (late 1800s) by crossbreeding wild cherry trees. The light pink blossoms in full bloom and the falling petals scattering in the wind are a magnificent sight to behold.

► Tokyo Tree



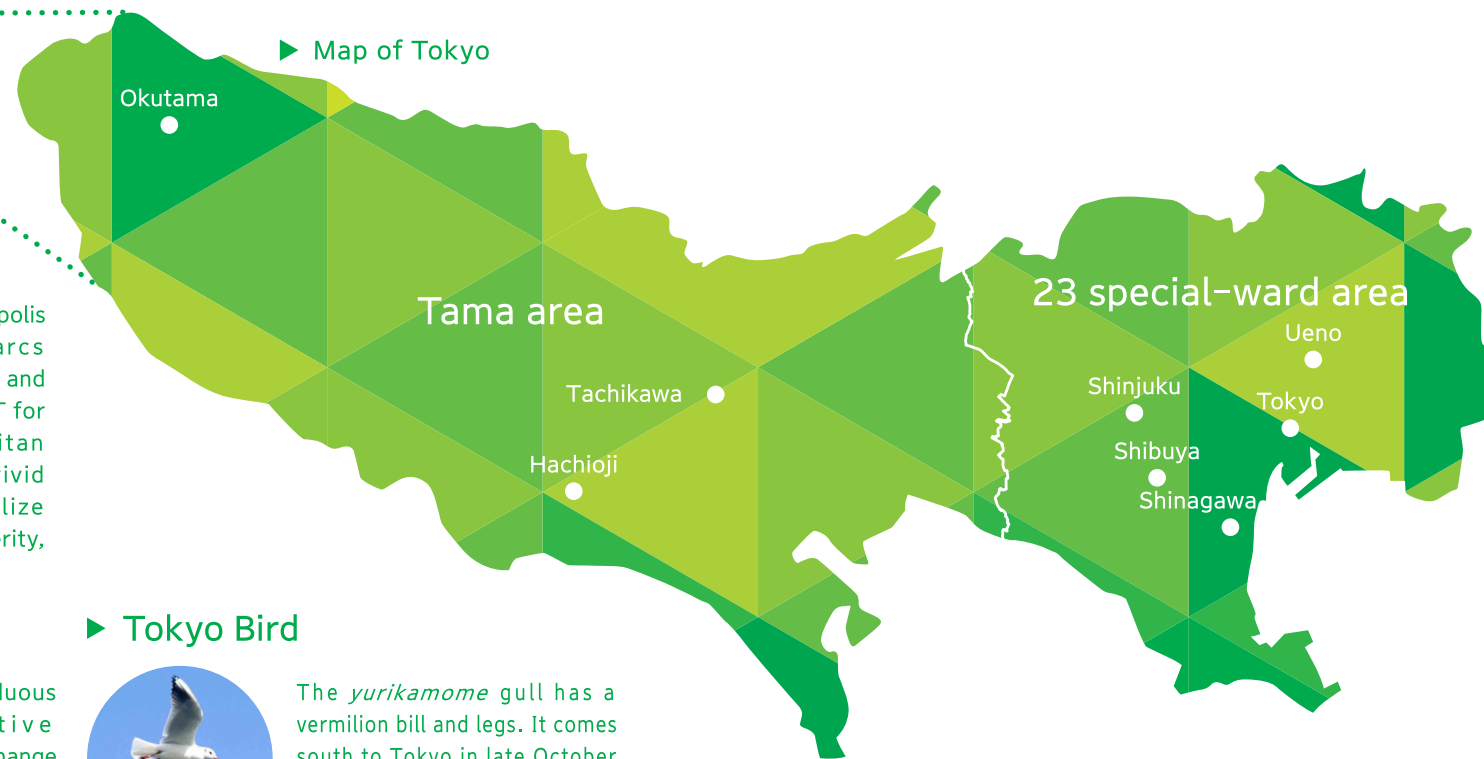
Ginkgo biloba is a deciduous tree with distinctive fan-shaped leaves that change from light green to bright yellow in autumn. The ginkgo tree is commonly found along Tokyo's streets and avenues, and is highly resistant to pollution and fire.

► Tokyo Bird

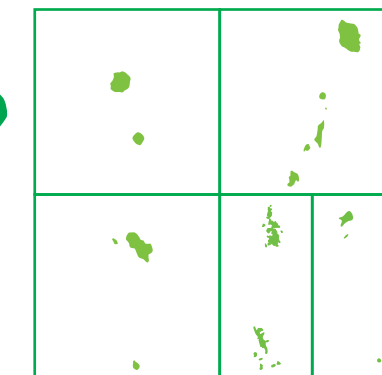


The *yurikamome* gull has a vermilion bill and legs. It comes south to Tokyo in late October every year and sojourns in the surrounding ports and rivers until the following April. A favorite theme of poets and painters, it is also called *miyakodori*, meaning "bird of the capital."

► Map of Tokyo



Islands



► Area

2,188.67 km²

► Number of Municipalities

23 wards 26 cities 5 towns 8 villages

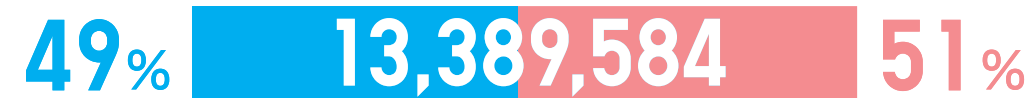
► Breakdown of Special Ward Area Land Use (Source: 2011 Land Use of Tokyo)



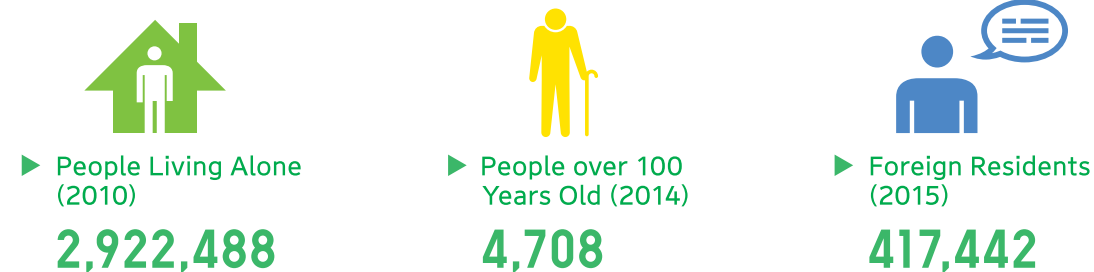
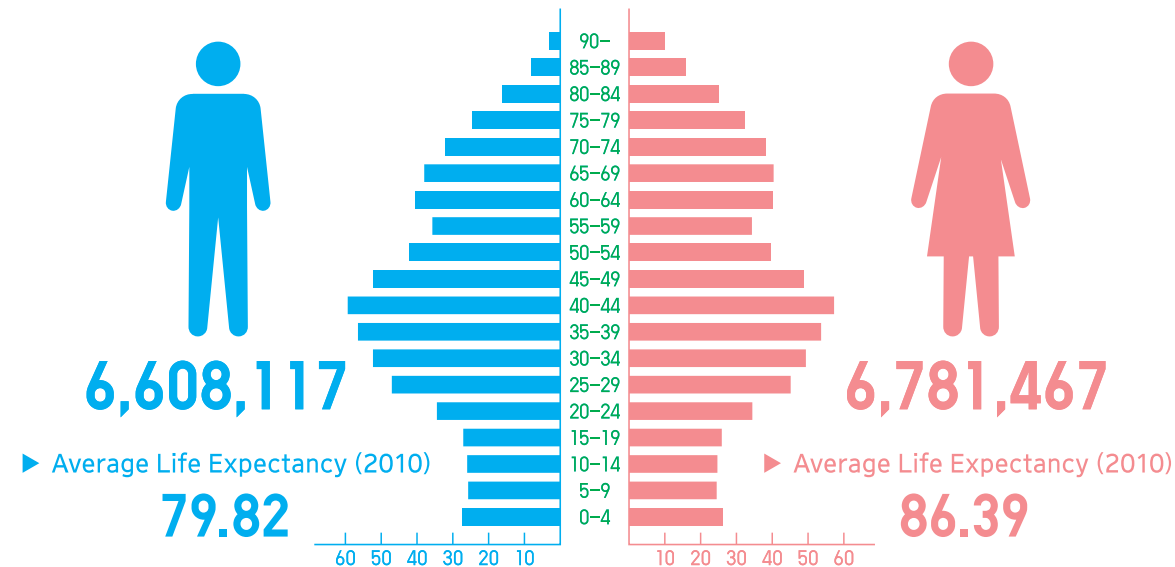
62,853 ha

TOKYO PEOPLE

► Population (2015)



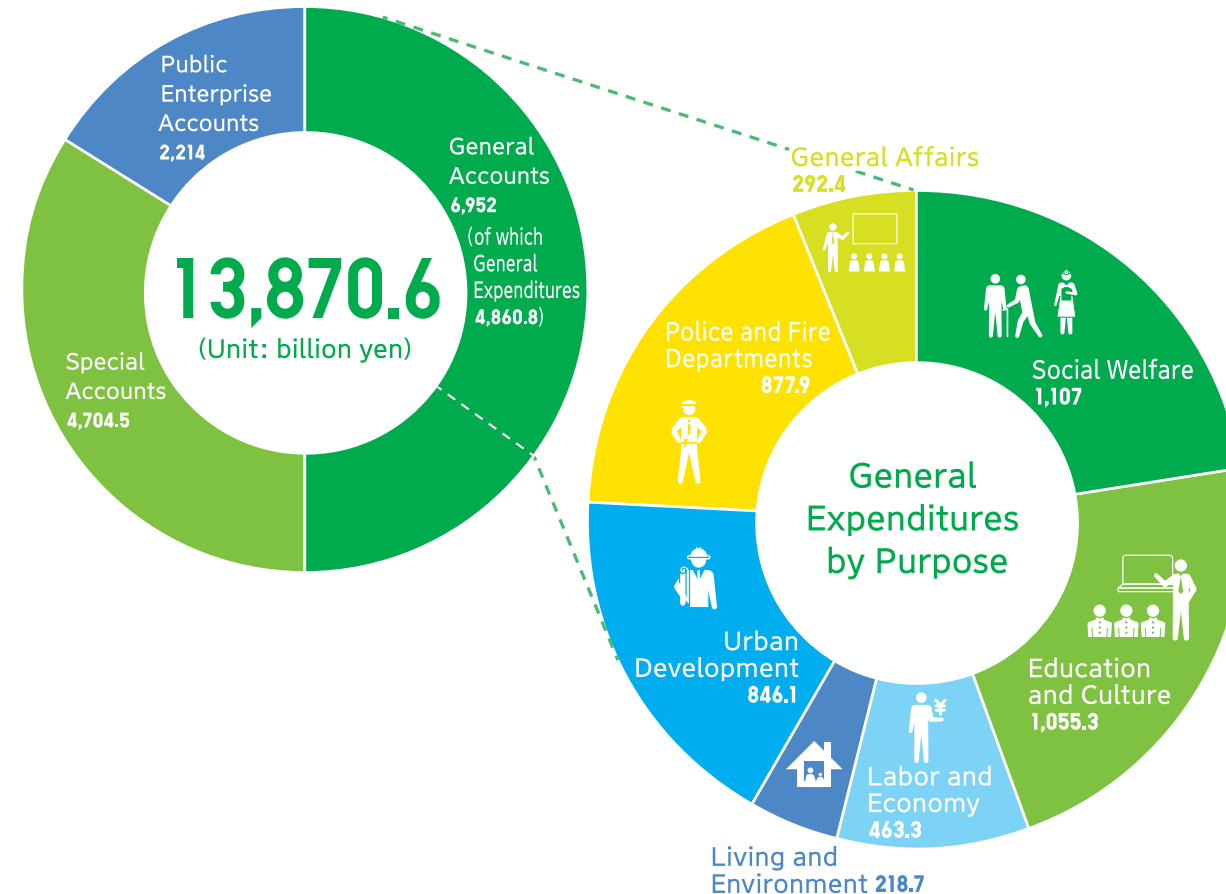
► Population Age Structure by Gender (2014)



TOKYO

Tokyo has a budget equivalent to the creates Tokyo's future, consists of the enterprise accounts. Here, we introduce the

► Budget of Tokyo (2015)



BUDGET

national budget of Sweden. The budget, which general accounts, special accounts and public breakdown of general expenditures.

TOKYO FRIENDSHIP



Sister and Friendship Cities/States of Tokyo



① New York City (United States of America)	② Beijing (People's Republic of China)	③ Paris (French Republic)
④ New South Wales (Australia)	⑤ Seoul (Republic of Korea)	⑥ Jakarta (Republic of Indonesia)
⑦ São Paulo (state Federative Republic of Brazil)	⑧ Cairo (Arab Republic of Egypt)	⑨ Moscow (Russian Federation)
⑩ Berlin (Federal Republic of Germany)	⑪ Rome (Republic of Italy)	

TOKYO 1 day

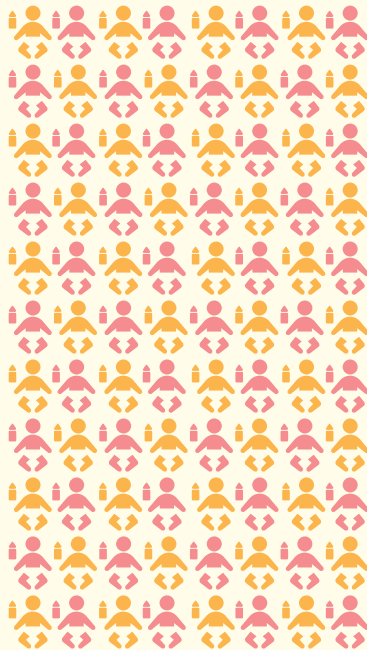
Tokyo is constantly changing every day.
Here we use numbers to show you what is happening in our city.



► Electric power consumption/person
6.2 kWh
(2012)

► People moving in
1,177
(2013)

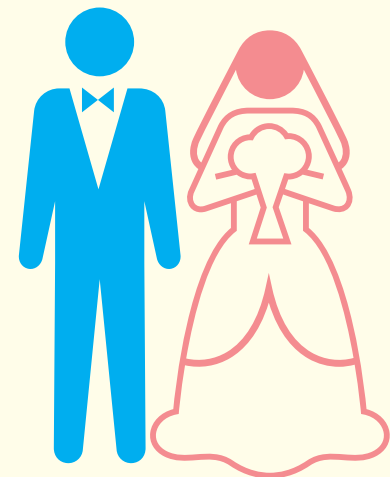
► Births
293
(2012)



► Newly employed
413
(2012)



► Food expenditure/
household
2,588 yen
(2012)



► Marriages
244
(2012)

► Divorces
69
(2012)

► People moving out
990
(2013)

TOKYO No.1 in JAPAN

Tokyo is No.1 in Japan in many areas—some of which are very easy to imagine and others that are quite surprising. Let's see how many you know.



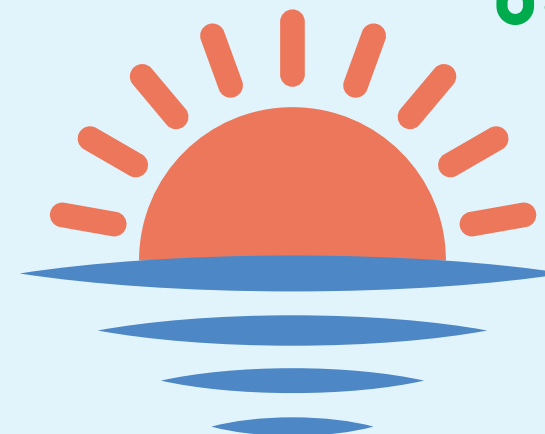
► Population density
6,032/km²

► Daily number of passengers using a station (Shinjuku station)
about **3.64 million**

► Percentage of population traveling abroad (2011)
16.4 %



► Michelin-starred restaurants
226



► First sunrise of the New Year
(Minami Torishima Island)

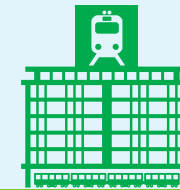
5:27 am

► Biggest Ferris wheel
Kasai Rinkai Park

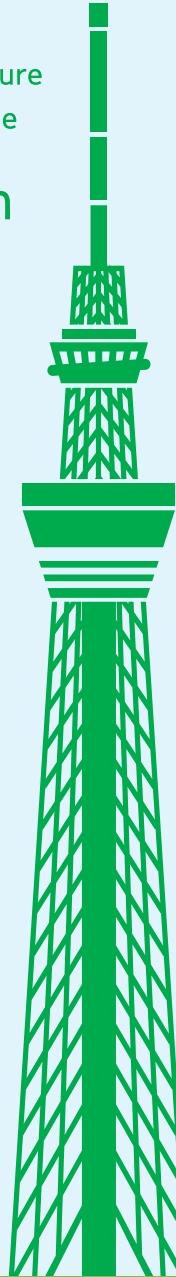
117 m
(as of 2009)



► Train stations
930



► Tallest structure
Tokyo SkyTree
634 m



► Longest tunnel Yamate Tunnel **18,200 m**

