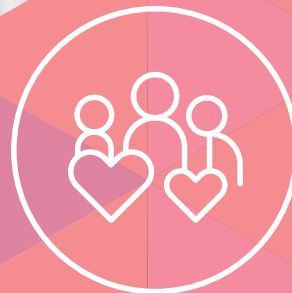


Strategy

5



Supportive Environment

In the areas of health and welfare and medical care, we will pass on a solid sense of security to following generations. As the city's population rapidly ages, we will strengthen initiatives to support the lives of residents far into the future. This is our vision as a city that provides residents with an advanced welfare system.



Approach

11

Provide firm support for parenting

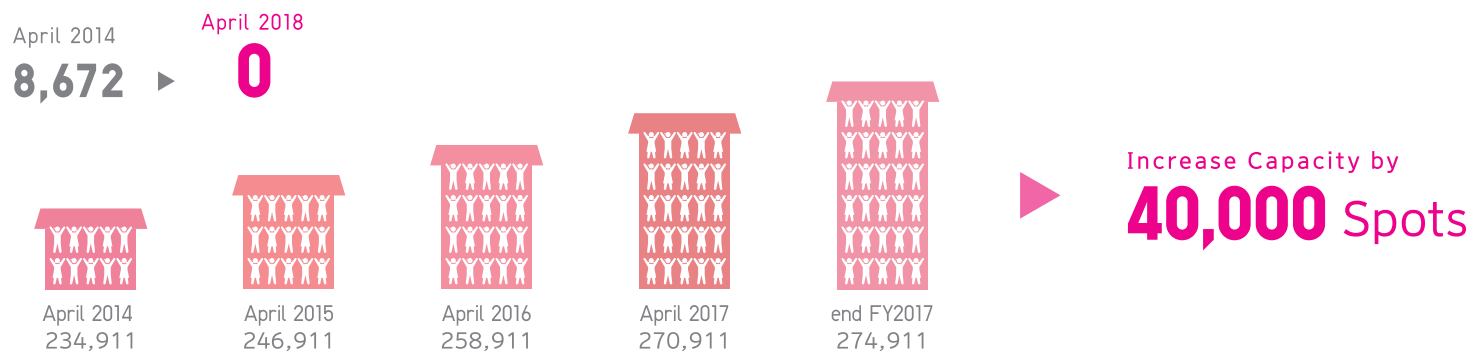
Families and the community will unite in efforts to look after children to ensure their sound growth. Daycare services will be bolstered to solve the waitlist issue so that Tokyo can become a city where people feel secure about raising children. Other parenting support policies will also be enhanced to meet diverse needs.

Tokyo in the Future

► No Shortage of Child Daycare Service

The number of waitlisted children is zero in FY2017 because our measures to help reduce the cost of establishing new facilities, including land rent, as well as programs aimed at securing and retaining daycare workers were able to lead to an increase of 40,000 spots.

► Waitlisted children



► Various Types of Daycare Services

Many types of daycare services are available, including facilities that take care of children who are sick or recovering, as well as company daycare centers that also accept children in the community.

	Target year	Target level
Daycare at metropolitan hospitals for sick and recovering children	steady introduction from FY2015	In municipalities with such needs, which also have a metropolitan hospital with a pediatrics dept.
Daycare at TMG building accepting children in the community	FY2016	open



► Safe Places for Children After School

By promoting the establishment of “after-school clubs” for primary school children who need daytime after-school care, there are no children on the waitlist in FY2019. All primary schools in Tokyo also have after-school programs that can be attended by any child.

► Children registered at after-school clubs

May 2014 end FY2019
 approx **89,000** ► **approx 102,000** 
 (a 12,000 increase)

► Public elementary schools with after-school programs open to all children

FY2013 end FY2019
1,062 ► **all 1,296**  **100%**
 (Figure may change due to consolidation.)

► Better Environment for Parenting

There are more family-friendly housing options and enjoyable places to go with children.

	Target year	Target level
Housing constructed through accreditation system for housing supportive of child-rearing	FY2017	1,200
Centers where families and groups of children can experience outdoor activities and <i>satoyama</i> culture	FY2024	8

